

RABUGGI

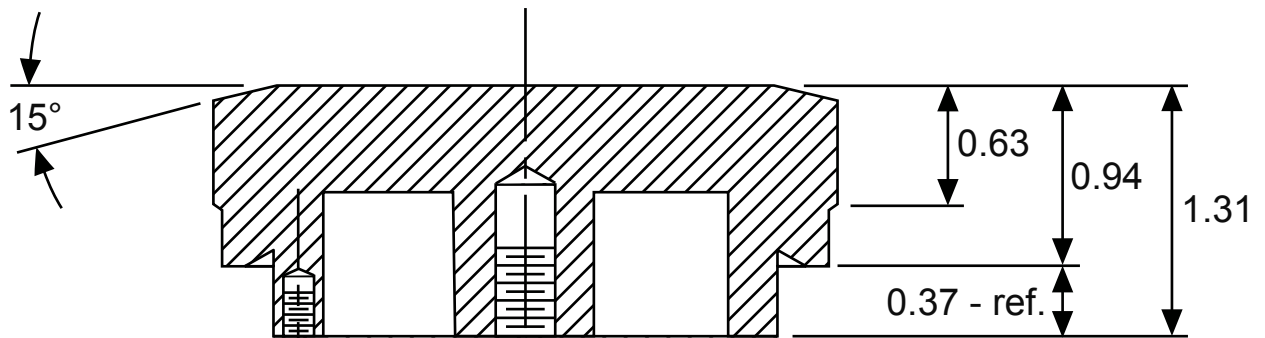
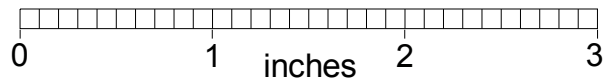
Cap - Radiator Shell

Oct. 16, 2011 - R.A.B.

Rev. Jan 15, 2013 - R.A.B.

Aluminum - 6061-T651
Extruded Round 3.50 dia.

scale: full



#6-32 - 0.35 dp.
(anti-rotation stud)

5/16-18 - 0.50 dp.

0.03

3.25 dia.
rect. grip pattern

2.12 dia.

2.63 dia.

0.75 dia.

- 1.) cut-off ~1.5"
- 2.) true both ends
- 3.) hog out inside
- 4.) turn 2.63 dia.
- 5.) drill, tap
flip...
- 6.) turn 3.25 O.D.
- 7.) turn O.D. relief dia.
- 8.) finish top face
- 9.) bevel top edge
- 10.) groove pattern O.D.