

INSTALLATION INSTRUCTIONS
FOR
FORWARD MOUNT
DUAL PEDAL ASSEMBLY

PART NUMBER
340-3950

**DISC BRAKES SHOULD ONLY BE INSTALLED BY SOMEONE
EXPERIENCED AND COMPETENT IN THE INSTALLATION
AND MAINTENANCE OF DISC BRAKES**

READ ALL WARNINGS

WARNING

IT IS THE RESPONSIBILITY OF THE PERSON INSTALLING ANY BRAKE COMPONENT OR KIT TO DETERMINE THE SUITABILITY OF THE COMPONENT OR KIT FOR THAT PARTICULAR APPLICATION. IF YOU ARE NOT SURE HOW TO SAFELY USE THIS BRAKE COMPONENT OR KIT, YOU SHOULD NOT INSTALL OR USE IT. DO NOT ASSUME ANYTHING. IMPROPERLY INSTALLED OR MAINTAINED BRAKES ARE DANGEROUS. IF YOU ARE NOT SURE, GET HELP OR RETURN THE PRODUCT. YOU MAY OBTAIN ADDITIONAL INFORMATION AND TECHNICAL SUPPORT BY CALLING WILWOOD AT (805) 388-1188, OR VISIT OUR WEB SITE AT WWW.WILWOOD.COM. USE OF WILWOOD TECHNICAL SUPPORT DOES NOT GUARANTEE PROPER INSTALLATION. YOU, OR THE PERSON WHO DOES THE INSTALLATION MUST KNOW HOW TO PROPERLY USE THIS PRODUCT. IT IS NOT POSSIBLE OVER THE PHONE TO UNDERSTAND OR FORESEE ALL THE ISSUES THAT MIGHT ARISE IN YOUR INSTALLATION.

RACING EQUIPMENT AND BRAKES MUST BE MAINTAINED AND SHOULD BE CHECKED REGULARLY FOR FATIGUE, DAMAGE, AND WEAR.



WARNING

DO NOT OPERATE ANY VEHICLE ON UNTESTED BRAKES!
SEE MINIMUM TEST PROCEDURE WITHIN

ALWAYS UTILIZE SAFETY RESTRAINT SYSTEMS AND ALL OTHER AVAILABLE SAFETY EQUIPMENT WHILE OPERATING THE VEHICLE.

IMPORTANT • READ THE DISCLAIMER OF WARRANTY INCLUDED IN THE KIT.

NOTE: Some cleaners may stain or remove the finish on brake system components. Test the cleaner on a hidden portion of the component before general use.

General Information and Assembly Instructions

Installation of this component should **ONLY** be performed by persons experienced in the installation and proper operation of disc brake systems. Before assembly begins, familiarize yourself with the following procedure to ensure a trouble-free installation.

Features:

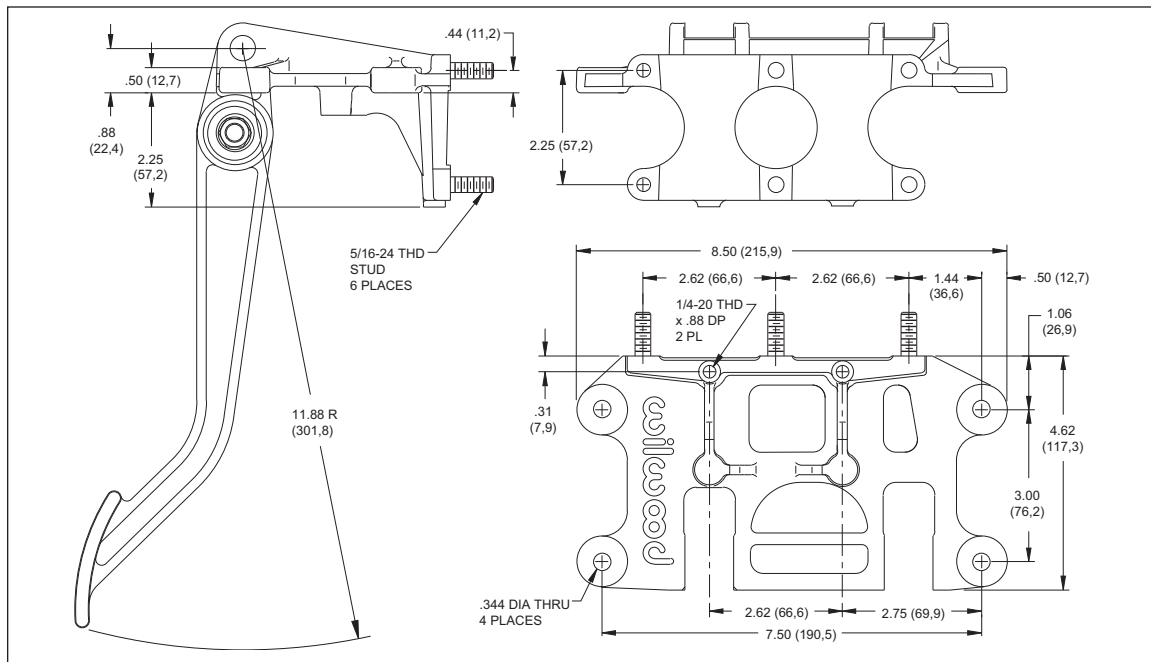
- Lightweight construction, only 3.7 pounds.
- High strength computer design.
- Includes brake balance bar.
- Brake and clutch pedal have 6.25:1 ratio.
- High strength steel master cylinder mounting studs.
- Easy mounting location.
- Non-slip pedals.
- Fully anodized finish.
- Finest quality hardware.
- Use with Wilwood composite or combination master cylinders.

Installation Instructions:

- Wilwood's forward mount dual pedal assembly must be mounted using the four outboard tab mounting holes. Attach the pedal assembly to two sturdy beams or plates with four 5/16 inch bolts. Pedal assembly must be rigidly attached to frame and not deflect under heavy pedal forces. Pedals must be free from obstructions over their entire range of motion. Allow enough space so balance bar adjustments can be made and masters cylinders are accessible.



Part No. 340-3950
(Shown w/Master Cylinders)



Forward Mount Dual Pedal Assembly, Physical Dimensions, 6.25:1 Ratio (P/N 340-3950)

Additional Information and Recommendations:

- The pedal assembly uses standard racing master cylinder mounting patterns. Wilwood's composite master cylinder and remote master cylinder's mount directly to the pedal assembly, as do most other high performance master cylinders. All master cylinder mounting hardware is included with the pedal assembly. Master cylinder flange should mount flush to pedal assembly and be held in place with enclosed washers and locknuts. The clevis on each pedal has a 5/16-24 thread. Make sure to use a jamnut on the master cylinder pushrod when threaded into clevis and check that pushrod is allowed to fully retract when pedal is released.

- Wilwood Hi-Temp[®] 570 Racing Brake Fluid (P/N 290-0632) or other DOT 3, DOT 4 or DOT 5.1 brake fluid is recommended for race cars and high performance vehicles where brake temperatures exceed normal operating conditions. **NOTE:** Silicone DOT 5 brake fluid is **NOT** recommended.

- Adjust the balance bar so that the appropriate front to rear brake balance is achieved.

- If after following the instructions, you still have difficulty in assembling your Wilwood forward mount dual pedal assembly, consult your local chassis builder, or retailer where the component was purchased for further assistance.